

Pneumatic Toggle Clamps

with Vertical Mounting Base

SPECIFICATION

Types

- Type **APV**: Forked clamping arm, with two flanged washers
- Type **CPV**: Forked clamping arm, with two flanged washers and clamping screw GN 708.1
- Type **EPV**: Solid clamping arm, with clasp for welding

Coding

- Coding **M**: Magnetic piston

Sheet metal parts
Case-hardened steel C10
Zinc plated, blue passivated

Bearing pins hardened

Bearing rivets
Case-hardened

Air cylinder bearing pins
Case-hardened

Double-action air cylinder
Max. pressure 6 bar

All moving parts

Lubricated with special grease

Clamping screw GN 708.1 (see page), type A

- Steel, zinc plated, blue passivated
- Rubber thrust pad 85 Shore A

INFORMATION

The clamping principle of toggle clamps GN 862 is identical in construction and dimensions to the manually operated vertical toggle clamps GN 812 (see page 1572).

To ensure an extended life of the mechanical parts as well as the air cylinders the operating pressure should not exceed 6 bar and a compressed air maintenance unit should be installed upstream.

Toggle clamps GN 862 have a permanent magnet integrated into the piston. In conjunction with sensors GN 3380 (see page), it is possible to detect the end position, such as for implementing machine controls.

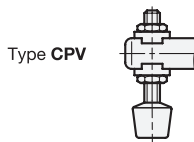
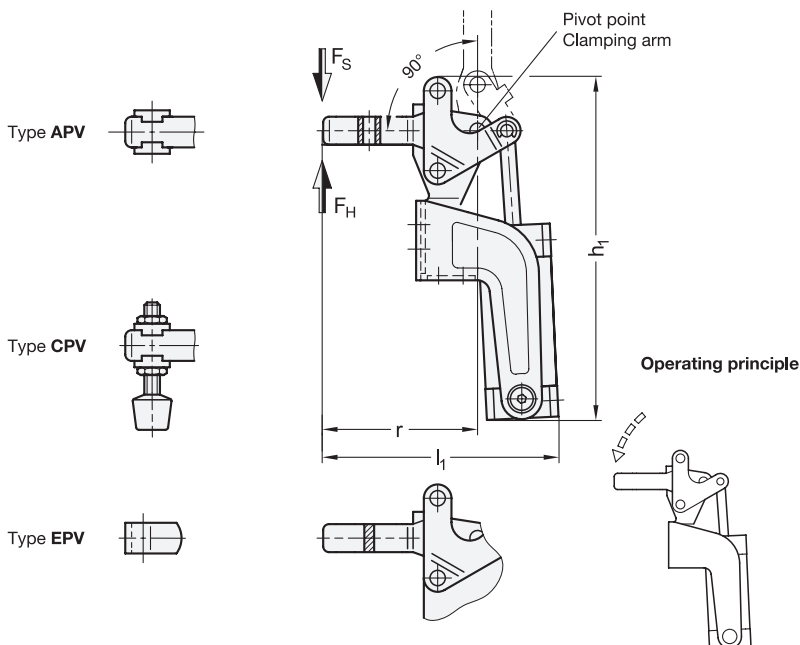


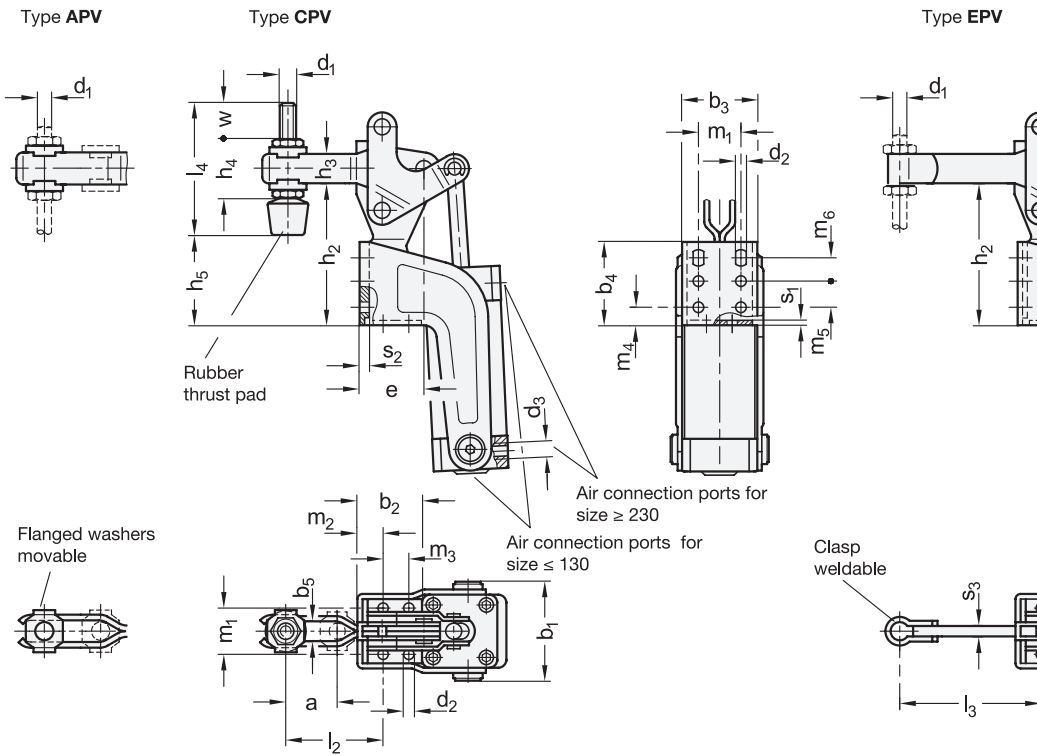
TECHNICAL INFORMATION

- General information for toggle clamps (see page 1560)
- List of pneumatic clamps (see page)

ACCESSORY

- Clamping Screws (see page 1629)
- Holders for Clamping Screws GN 801 (for Type AP) (see page 1629)
- Holders for Clamping Screws GN 809 (for Type EP) (see page 1630)
- Sensor GN 3380 (see page)





GN 862

Description	Size	FH in N	FS in N	a	b1	b2	b3	b4	b5	d1	d2	d3	Inside Ø connection tube	e	h1	h2	h3	h4	h5	l1	l2	l3 max.	l4	m1	m2	m3	m4	m5	m6	r	s	w	⚖	
GN 862-75-APV-M	75	750	570	20	47	25.5	40	30	5.2	M5	4.5	M5	4	28	154	43	11	-	-	99	36.5	-	-	24	8.5	12.5	10	12.5	-	62.5	-	-	500	
GN 862-130-APV-M	130	1100	610	28	51	33	47	49	6.2	M6	5.6	G1/8	4	38	167	70	16	-	-	118	47	-	-	27	13	12.5	16	12.5	12.5	79	-	-	750	
GN 862-230-APV-M	230	2200	1260	40	58	38	46	51	8.5	M8	6.5	G1/8	4	41.5	218	87	18	-	-	153	67	-	-	26	14	16	11	16	14.2	104	-	-	1250	
GN 862-330-APV-M	330	2600	1800	45	70	52.5	56	79	10.5	M10	8.5	G1/4	6	52.5	263	108	22	-	-	182	72	-	-	30	16	28	19	30	20	121	-	-	2200	
GN 862-75-CPV-M	75	750	570	20	47	25.5	40	30	5.2	M5	4.5	M5	4	28	154	43	11	19	28	99	36.5	-	-	45	24	8.5	12.5	10	12.5	-	62.5	-	15	510
GN 862-130-CPV-M	130	1100	610	28	51	33	47	49	6.2	M6	5.6	G1/8	4	38	167	70	16	25.5	53	118	47	-	-	55	27	13	12.5	16	12.5	12.5	79	-	17.5	766
GN 862-230-CPV-M	230	2200	1260	40	58	38	46	51	8.5	M8	6.5	G1/8	4	41.5	218	87	18	30	63	153	67	-	-	68	26	14	16	11	16	14.2	104	-	20	1279
GN 862-330-CPV-M	330	2600	1800	45	70	52.5	56	79	10.5	M10	8.5	G1/4	6	52.5	263	108	22	37	80	182	72	-	-	77	30	16	28	19	30	20	121	-	19	2255
GN 862-75-EPV-M	75	750	570	-	47	25.5	40	30	-	M5	4.5	M5	4	28	154	43	11	-	-	100	-	-	46	-	24	8.5	12.5	10	12.5	-	63	4	-	500
GN 862-130-EPV-M	130	1100	610	-	51	33	47	49	-	M6	5.6	G1/8	4	38	167	70	16	-	-	119	-	-	58	-	27	13	12.5	16	12.5	12.5	80	5	-	750
GN 862-230-EPV-M	230	2200	1260	-	58	38	46	51	-	M8	6.5	G1/8	4	41.5	218	87	18	-	-	155	-	-	81	-	26	14	16	11	16	14.2	105	6	-	1255
GN 862-330-EPV-M	330	2600	1800	-	70	52.5	56	79	-	M10	8.5	G1/4	6	52.5	263	108	22	-	-	184	-	-	91	-	30	16	28	19	30	20	123	7	-	2200